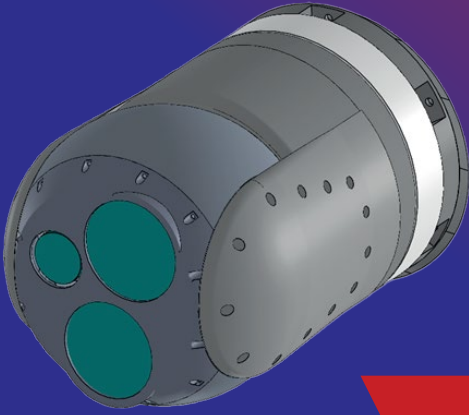


# GÖKGÖRÜ DRONE GIMBAL 150 A2F



ISTANBUL  
DEFENCE  
SYSTEMS



# GÖKGÖRÜ DRONE GIMBAL 150 A2F

The main features of the GÖKGÖRÜ DRONE GIMBAL 150 A2F are:



Day and Thermal Camera



Special for Unmanned Vehicles



Built-in INS/GPS

Maximum Weight	2.125 g
Maximum Height	250 mm
Maximum Diameter	180 mm
<b>Thermal Camera</b>	
Detector Type	2 x LWIR (uncooled)
Detector Size	2 x 640x480
Lens	f→14, F1.0 / f→55 mm, F1.0
Pixel Size	12 µm
FOVs	43.3° - 8.2°(h) x 30.9° - 6.7° (v)
Spectral Band	8-14 µm
NETD (f#1.0)	<=60mK
Optic/Digital Zoom	5x Optical
Focus	Continuous
Auto Focus	✓
Built In Test	✓
Window Defrost	Optional
Power Consumption	<3W Nominal
<b>Day TV Camera</b>	
Sensor Type	CMOS (Sony FCB-7520A)
Optic Zoom	30X
Focus	Continuous
FOVs	63.7° to 2.3° @ 1080 p (h)
Resolution	1920x1080px
Frame Rate	60 Hz
Illumination	<.001 Lux
Pixel Size	<3,5 µm
Digital Zoom	4X
Image Stabilisation	✓
Anti Blooming	✓
Auto Focus	✓
Window Defrost	Optional
Power Consumption	<6W Nominal
Detection Range	< 22 km
Recognition Range	< 14,7 km
Identification	< 8,8 km

## Pan & Tilt Systems

<b>System Type</b>	2 axis mechanical stabilization
<b>Pan</b>	±180°
<b>Pan Velocity</b>	100°/s
<b>Pan Acceleration</b>	20 rad/s <sup>2</sup>
<b>Pan Accuracy</b>	20 arcsec
<b>Pan Repeatability</b>	10 arcsec
<b>Pan Angular Velocity Error</b>	≤ 0.1°/s
<b>Tilt</b>	+30° / -90°
<b>Tilt Velocity</b>	100°/s
<b>Tilt Acceleration</b>	20 rad/s <sup>2</sup>
<b>Tilt Accuracy</b>	20 arcsec
<b>Tilt Repeatability</b>	10 arcsec
<b>Tilt Angular Velocity Error</b>	≤ 0.1°/s
<b>Position Accuracy without power</b>	±0.01°
<b>Pressurization</b>	✓
<b>Joystick Control</b>	✓
<b>SW Control</b>	✓
<b>Stabilization</b>	50 Hz
<b>Gyro Noise</b>	12 uRad
<b>Stabilization</b>	<200 µrad RMS
<b>Motors</b>	Direct Drive
<b>Electronic Units</b>	
<b>P&amp;T Status Control</b>	✓
<b>Digital Video Output</b>	Ethernet (>18Mbps)
<b>Video Source</b>	Selective
<b>Controls</b>	RS485
<b>Interface Connector</b>	15 pin high density Dsub IP67
<b>BIT</b>	✓
<b>Min Time for Operation</b>	< 30 s
<b>Max Operational Time</b>	75 min
<b>Voltage</b>	24-33 VDC
<b>Power Consumption</b>	17W typical / 75W peak
<b>System Support</b>	MGRS and decimal degree system support

## Software

	Uploaded
Gimbal Controls	✓
DHCP or static IP addressing	✓
Unicast and Multicast video stream	Unicast
Thermal Camera	✓
White Hot Black Hot	