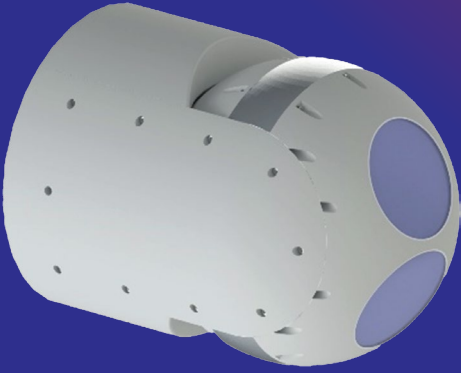


GÖKGÖRÜ DRONE GIMBAL 150



ISTANBUL
DEFENCE
SYSTEMS



GÖKGÖRÜ DRONE GIMBAL 150

The main features of the GÖKGÖRÜ DRONE GIMBAL 150 are:



Day and Thermal Camera



Special for Unmanned Vehichles



Built-in INS/GPS

Maximum Weight	2.125 g
Maximum Height	250 mm
Maximum Diameter	180 mm
Thermal Camera	
Detector Type	LWIR (uncooled)
Detector Size	640x480
Lens	f→35 mm, F>1.2
Pixel Size	12 µm
FOVs	28.7° (h) x 21.5° (v)
Spectral Band	8-14 µm
NETD (f#1.0)	<=60mK
Optic/Digital Zoom	2x Digital
Focus	Fix
Built In Test	✓
Power Consumption	<3W Nominal

Day TV Camera	
Sensor Type	CMOS (Sony FCB-EV7100)
Optic Zoom	10X
Focus	Continuous
FOVs	58.9° (h) - 33.1° (v) (16:9)
Resolution	1920x1080px
Frame Rate	50 Hz
Illumination	<.001 Lux
Pixel Size	<3,5 µm
Digital Zoom	2X
Image Stabilisation	✓
Anti Blooming	✓
Auto Focus	✓
Power Consumption	<6W Nominal

Pan & Tilt Systems

System Type	2 axis mechanical stabilization
Pan	±180°
Pan Velocity	100°/s
Pan Acceleration	20 rad/s2
Pan Accuracy	20 arcsec
Pan Repeatability	10 arcsec
Pan Angular Velocity Error	≤ 0.1°/s
Tilt	+30° / -90°
Tilt Velocity	100°/s
Tilt Acceleration	20 rad/s2
Tilt Accuracy	20 arcsec
Tilt Repeatability	10 arcsec
Tilt Angular Velocity Error	≤ 0.1°/s
Position Accuracy	without power
Pressurization	✓
Joystick Control	✓
SW Control	✓
Stabilization	50 Hz
Gyro Noise	12 uRad
Stabilization	<200 µrad RMS
Motors	Direct Drive
Electronic Units	
P&T Status Control	✓
Digital Video Output	Ethernet (>18Mbps)
Video Source	Selective
Controls	RS485
Interface Connector	15 pin high density Dsub IP67
BIT	✓
Min Time for Operation	< 30 s
Max Operational Time	75 min
Voltage	24-33 VDC
Power Consumption	17W typical / 75W peak
System Support	MGRS and decimal degree system support

Software

Uploaded	
Gimbal Controls	✓
DHCP or static IP addressing	✓
Unicast and Multicast video stream	Unicast
Thermal Camera	✓
White Hot Black Hot	